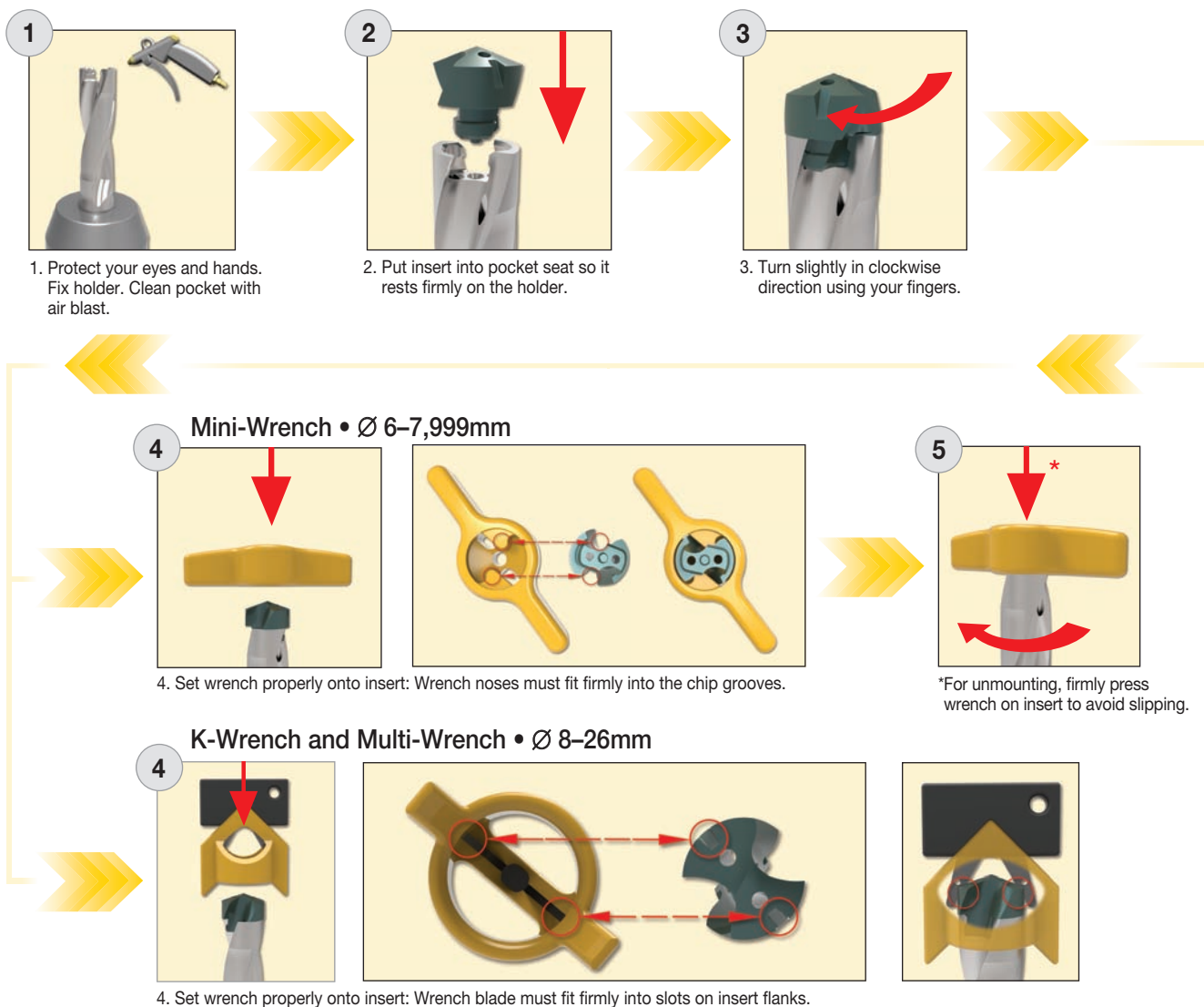


**KenTIP™**  
**ASSEMBLY INSTRUCTION MANUAL**



## Mounting



## Available Smart Wrenches

### Mini-Wrench

Wrench noses must fit into the chip grooves.



### K-Wrench

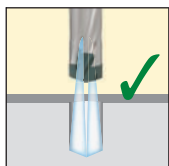
Wrench blades must fit into insert slots.



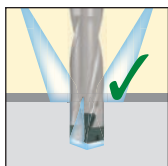
### Multi-Wrench



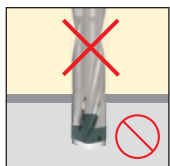
## Coolant



Internal coolant is recommended for all applications.



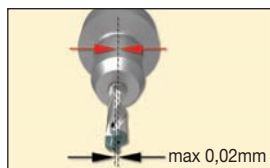
Flood coolant only for drilling depth  $\leq 3 \times D$ .



Dry cutting is not recommended. MQL ability is limited.

## Core Deviation

### Machining Center



### Stationary Drill/Lathe

